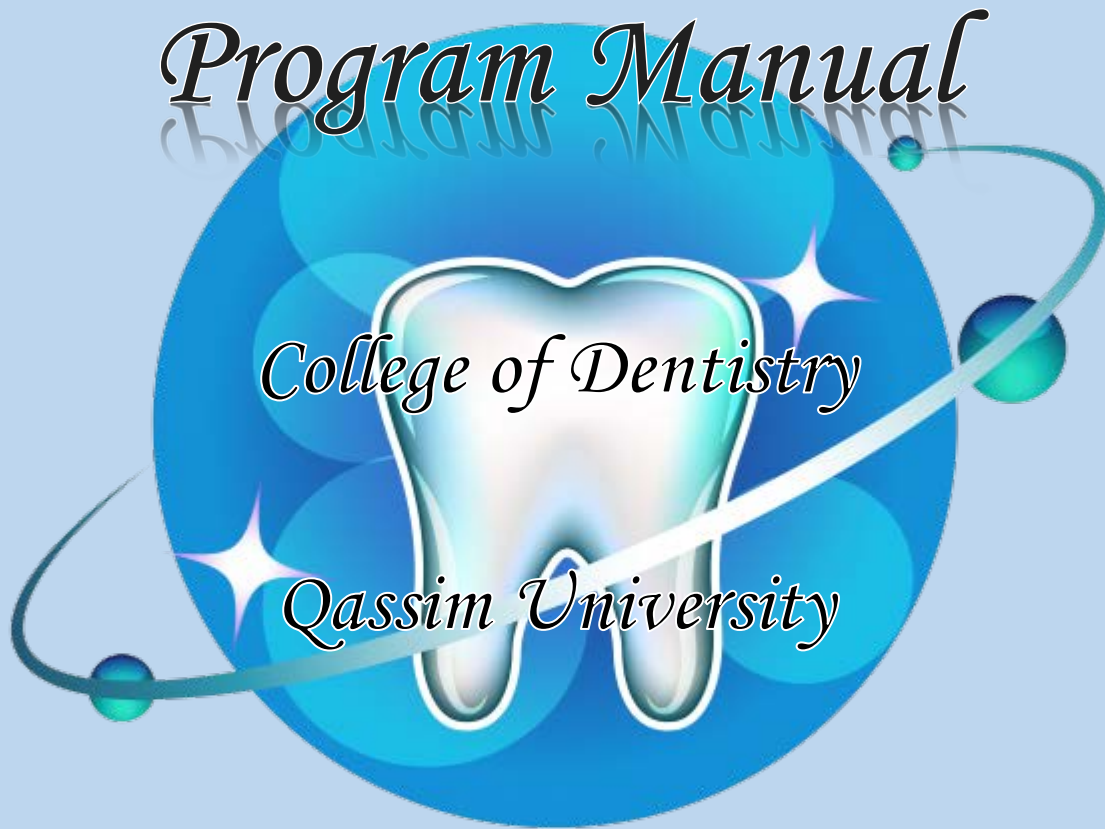


Program Manual



2025/1447

Version III

Prepared by Quality Assurance Unit
College Council Approval (5th Session 25-26, 05/11/2025, Decision #16/5/36/47_48)



Quality Assurance Unit

Table of Contents

<i>College Structure</i>	6
<i>Dean's Message</i>	7
<i>University Vision</i>	8
<i>University Mission</i>	8
<i>College Vision</i>	9
<i>College Mission</i>	9
<i>College Values</i>	10
<i>College Strategic Goals</i>	10
<i>Program Mission</i>	11
<i>Degrees Granted By The Program</i>	11
<i>Departments</i>	11
<i>The Program Study Systems</i>	12
<i>Admission Requirements</i>	12
<i>Graduate Attributes</i>	13
<i>Program Goals</i>	14
<i>Program Objectives</i>	15
<i>Program Learning Outcomes</i>	16
<i>Goals, Objectives, and Learning Outcomes Matrix</i>	17
<i>Program Learning Outcomes Mapping Matrix</i>	20
<i>Program Structure</i>	22
<i>Numbering And Coding The Courses</i>	23
<i>Program Study Plan</i>	24
<i>Introducing Postgraduate Programs</i>	33

Quality Assurance Unit

<i>Grades and Graduation Process</i>	33
<i>Program Regulations</i>	34
<i>Academic Advising and Support</i>	35
<i>Objectives of the Academic Advising and Support Unit</i>	35
<i>Tasks of the Academic Advising and Support</i>	36
<i>Student Responsibility and Role</i>	37
<i>Student Counseling Services</i>	37
<i>Academic counseling and advising for students</i>	37
<i>Student Advising and Counseling Services</i>	41
<i>Learning Resources, Facilities, and Equipment</i>	42
<i>Learning Resources</i>	42
<i>Libraries</i>	42
<i>Saudi Digital Library</i>	43
<i>Periodicals Department</i>	43
<i>Arrangements to Maintain a Healthy and Safe Environment</i>	43
<i>Student Services</i>	44
<i>Peer Education Program</i>	44
<i>Honoring Outstanding Students</i>	44
<i>Medical Care</i>	44
<i>Special Needs</i>	44
<i>Transportation Services</i>	45
<i>Alumni and Graduates' Employees</i>	45
<i>Extracurricular Activities</i>	45
<i>Student Clubs</i>	45
<i>Athletic and Cultural Facilities</i>	46
<i>Entertainment</i>	46
<i>Religious and Social Awareness Program</i>	46
<i>Community Services</i>	46

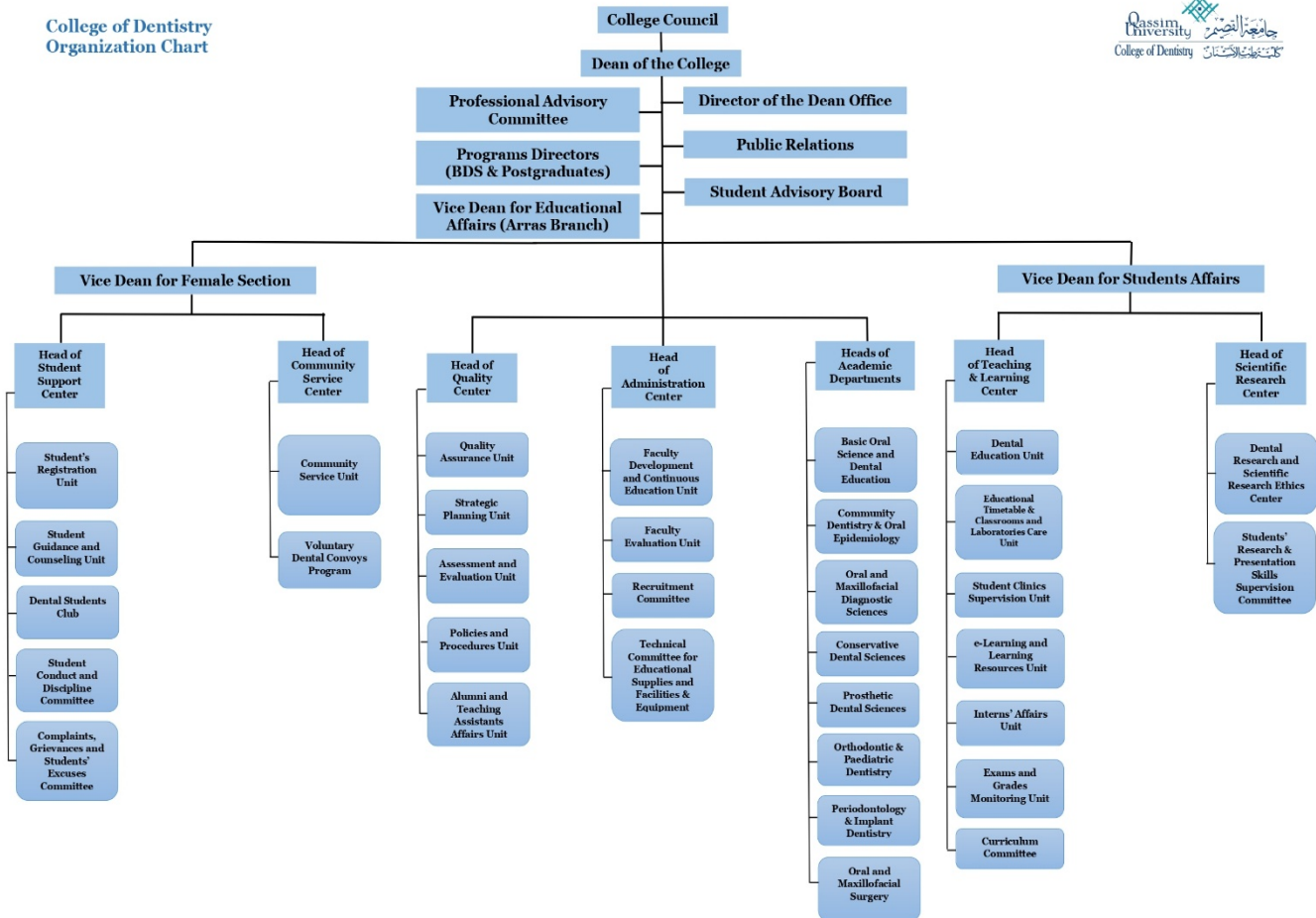
Quality Assurance Unit

<i>Purpose</i>	47
<i>Events</i>	47
<i>Teaching Staff Services</i>	49
<i>Teaching Staff Performance Assessment</i>	49

Quality Assurance Unit

College Structure

College of Dentistry
 Organization Chart



Quality Assurance Unit

Dean's Message

الحمد لله العلي الكبير ، اللطيف الخبير، خلق كل شيء فأحسن التقدير، و دبر الخلائق فأحسن التدبير، و الصلاة و السلام على رسوله البشير النذير، و السراج المنير...

أما بعد ،،،

يسعدني ان اصنع بين ايديكم هذا الدليل المفصل للبرنامج الخاص بكلية طب الأسنان في جامعة القصيم، و الذي كان و لايزال هدفه الاسمي هو الحرص على تقييم الاداء في سبيل تحقيق المزيد من التطوير و التميز.

و إيماناً بأن من لا يشكر الله لا يشكر الناس فيسعدني ان اتوجه بجزيل الشكر لمعالي رئيس الجامعة أ.د عبد الرحمن بنحمد الداوود، لدعمه المتواصل للكلية و لأبنائه الطلاب و لكل ما من شأنه رفعة مستوى الجامعة و تطوير طلابها الفاضل حرصه على الرقي بمخرجاتها و اداء رسالتها على التحو الأكمل. كما يسعدني ان أتوجه بالشكر لسعادة وكلاء الجامعة على جهودهم الملموسة و مبادراتهم الدائمة لتذليل العقبات.

ثم بكل كلمات الود و الاحياء و التقدير ارد أن أقدم بالشكر الى منسوبي الكلية من أعضاء هيئة التدريس و طلاب و فنيين إداريين على ما قدموه من عمل و جهد و الذي كان له الأثر الكبير فيما تم إنجازه بعد توفيق الله و فضله.

واسأل الله تعالى ان يوفقنا جميعاً لما فيه خير البلاد و الجداد، إنه ولي ذلك و القادر عليه.

Praise be to God, the Highest, the Great, the Kind, the All-Knowing, He created everything with the best judgment, and managed the creatures with the best measure, and prayers and peace be upon His Messenger, the evangelist, the warmer, and the enlightening lamp...

Then,

I am pleased to put in your hands this detailed guide for the special program for the College of Dentistry at Qassim University, which was and still is the ultimate goal of ensuring performance evaluation in order to achieve further development and distinction.

Believing that he who does not thank God does not thank people, I am pleased to extend my sincere thanks to His Excellency the President of the University, Prof. Dr. Abdul Rahman Bin Hamad Al-Daoud, for his continuous support to the College and to its student children and to everything that would raise the level of the university and develop its students, stemming from his keenness to advance its outputs and performance. Her message is perfect. I am also pleased to extend my thanks to His Excellency the University's Vice Rectors for their tangible efforts and their permanent initiatives to overcome obstacles.

Then, with all the words of friendliness, brotherhood and appreciation, I want to extend my thanks to the faculty members, students and administrative technicians for their work and effort, which had a great impact on what was accomplished after the success and grace of God.

And I ask God Almighty to guide us all to that which is good for the country and the servants, for He is the Guardian of that and the One who is able to do so.

Quality Assurance Unit

University Vision

National leadership in education, research and sustainability, and an effective partnership nationally and globally.

University Mission

Providing educational, professional, research and advisory services that enhance sustainable national development and self-resources; In an inspiring, controlled environment that activates innovation, technology and partnership.

College of Dentistry

College of Dentistry, Qassim University is one of the modern colleges among Saudi Arabia. The Royal Decree to establish the college was issued on 18 / 1 / 1426 Hijri. The college had received its first batch of students starting from the academic year 1428-1429 Hijri.

College Vision

National leadership in education, research and community services in the field of dentistry.

College Mission

Graduate dentists of high scientific, professional and research competency, committed to continuous education, developing the profession and fulfill the needs of the labor market.

Quality Assurance Unit

College Values

- **Justice:** We seek to achieve the principles of fairness and equal opportunities for all.
- **Honesty:** We perform with loyalty and commit to morality and professional ethics.
- **Creativity:** We encourage innovative thinking and valuable creative initiatives.
- **Perfection:** We apply the highest quality standards to distinguish our outputs.
- **Transparency:** We are committed to disclosure and support requirements of accountability and integrity.
- **Belongingness:** We foster a sense of national belongingness and the spirit of initiative, giving and volunteering.
- **Institutionalism:** We establish a culture of intellectual and behavioral team work.

College Strategic Goals

- Assurance of the quality of education and achieving excellence in the educational programs.
- Raising the competence, competitiveness and professionalism of students.
- Enhancement of the research identity and improvement of applied research and innovation.
- Development of institutional governance administrative performance and enhancement of institutional satisfaction and loyalty.
- Completion, development and sustainability of infrastructure.
- Enhancement of partnership and knowledge exchange nationally and internationally.
- Enhancement of the role of the college in providing community services.

Bachelor of Dental Surgery (BDS) Program

Program Mission

Teaching dental students to become qualified in the general practice of dentistry by providing a distinguished educational program that meets the needs of the labor market, in accordance with the highest clinical standards to meet the professional needs, committed to continuous education, providing research and local community service programs.

Degrees Granted By The Program

The college offers Bachelor of Dental Surgery (BDS).

Departments

Based on the decision of the Council of Higher Education No. 9/57/1431, college departments were restructured to be as follows:

- Basic Oral science and Dental Education
- Community Oral Health and Epidemiology Department
- Department of Oral and Maxillofacial Diagnostic Sciences
- Oral and Maxillofacial Surgery Department
- Conservative Dental Sciences Department
- Prosthetic Dental Sciences Department
- Orthodontics & Pediatric Dentistry Department
- Periodontology and Implant Dentistry Department

The Program Study Systems

The Program Specifically Characterized by the following:

- Problem-based learning
- Team- based learning
- Community-based learning
- Competency- based learning
- Scientific Presentation Skills and Research

Admission Requirements

Based upon recommendations from the program of Dentistry councils and the stakeholders, Qassim University Council identifies the number of students that may be admitted in the new academic year.

The following requirements have been stipulated for the admission of the new student:

- Must obtain a secondary school certificate or equivalent from inside or outside the Kingdom of Saudi Arabia.
- The secondary school certificate should not be more than five years old and the University Council may grant exemption from this term if there are good reasons.
- Should be with good conduct and behavior.
- Should successfully pass the interview adopted by the University council.
- Should be medically fit.
- Should obtain approval from his employer allowing him to study if he is working in the private or public sector.
- Should fulfill any other terms fixed by the University Council, which should be announced in the time of application.
- Must not be dismissed from another university for disciplinary or educational reasons.
- Must not have a bachelor's degree, or its equivalent, to obtain another bachelor's degree; the President of the University has the right for exemption from this condition.
- Must not be enrolled for another bachelor's degree, or lower, in the same university or another university.

Quality Assurance Unit

- All the procedures and regulations regarding the calculation of the students' GPA are under the complete authority of the Deanship of Admission and Registration and applied through the automatic official academic system of the University.
- Starting from the academic year 2023-2024, the students are admitted to the College of Dentistry directly from the secondary school according to the rules and regulations of the University. This admission is followed by an interview in the College mentioned above.

Graduate Attributes

- **1.1** A graduate with in-depth knowledge in the provision of dental care and research, with the commitment to continuous learning and professional development.
- **2.1** A graduate with effective communication skills with others, in addition to the application of research methodologies to cope with the latest information concerned with dentistry.
- **2.2** A graduate with the ability to solve problems, apply diverse skills and knowledge to provide and apply different levels of oral/dental health care; in addition to have the ability to collect, analyze and organize quantitative and qualitative data, design and conduct research projects.
- **2.3** A Graduate possesses practical performance skills and technical and technological knowledge to analyze oral health and pathological conditions relevant to clinical dental practice with emphasis on their management and the required interactions that enable him to enter the labor market and develop in it.
- **3.1** A graduate with the ability to work independently and effectively in an oral health care team with maintaining high quality of care, take responsibility, and make appropriate decisions in the field of dentistry.
- **3.2** A graduate with professional integrity and commitment to contribute to solving oral health problems with knowledge of the relationship between environmental issues, oral health, and the health of communities and society.

Quality Assurance Unit

Program Goals

- Teaching the students the concepts, principles, basic theories, and research methodologies in the fields of dentistry.
- Enabling students to apply the dental conceptual perception, skills of critical thinking, problem-solving and decision- making in the fields of dentistry to fulfill the requirements of the labor market.
- Providing the students with the ability and competency in motor skills necessary for different methods in dentistry.
- Providing the students with the essential skills to apply the information technology, basic quantitative skills and problems management skills, developing the student's competency in oral and written communications in the field of dentistry while considering the production and quality improvement of applied research.
- Providing students with the basics of teamwork, applying ethical issues, personal and social responsibilities for the provision of community services.

Program Objectives

- Provide the students with facts, theories and principles concerned with basic oral and biomedical sciences as well as clinical techniques.
- Provide the students with knowledge of behavioral and communication skills, that enable students to work in the dental field and formulate the research projects in accordance with ethical principles and professional personality.
- Stimulate the students' critical thinking and problem-solving principles, which enrich learning outcomes.
- Acquire the skills to analyze the tools necessary for effective differential diagnosis and management of dental patients competently.
- Facilitate the students' coordination between mental capability and dental motor skills which are essential for practicing dentistry.
- Enhance the students' effective communication skills through updated communication tools and skillful use of information technology that serves dental profession.
- Stimulate the self-evaluation of the level of learning and performance in the dental field, and encourage the decision-making to continuous self-improvement.
- Implement principles of professionalism, ethics and behavioral sciences while adhering to the social issues that is related to dental practice, including effective teamwork and leadership values.

Program Learning Outcomes

- **K.1** Recognize the basic medical and dental sciences sufficient to augment students in dental management.
- **K.2** Describe the various clinical techniques, procedures and appropriate investigations related to the practice of dentistry.
- **K.3** Outline knowledge about the oral and dental health structure and systems.
- **K.4** Outline concepts, principles of law, ethics, leadership and teamwork, professionalism and research methodologies in dentistry.
- **S.1** Develop clinical reasoning and decision-making skills using evidence based-knowledge based on problem-solving and critical thinking, in addition to carry out advanced research using specialized techniques of research and enquiry in the field of Dentistry.
- **S.2** Analyze the clinical presentation and appropriate investigations, necessary for the differential diagnosis and management plan of dental patients.
- **S.3** Perform high levels of manual dexterity and control over dental equipment, to achieve excellence in dental patient treatment.
- **S.4** Operate three-dimensional procedures with visual acuity and hand-eye coordination.
- **S.5** Illustrate the methods associated with a good dental practice and effective dental communication.
- **S.6** Operate information technology tools and develop essential numerical skills in the dental field including research.
- **V.1** Demonstrate the scope of personal confidence and community responsibility concerned with the dental profession.
- **V.2** Apply the behavioral sciences and the principles of professionalism related to the dental practice.
- **V.3** Collaborate and participate effectively in research in addition to taking the culture of leadership and teamwork skills with colleagues and other dental health personnel in the delivery of oral health care.

Quality Assurance Unit

Goals, Objectives, and Learning Outcomes Matrix

Domains	Program Goals	Program Objectives	Program Learning Outcomes By the end of the program the students should be able to:
Knowledge and Understanding	1-Teaching the students the concepts, principles, basic theories, and research methodologies in the fields of dentistry.	1-1 Provide the students with facts, theories and principles concerned with basic oral and biomedical sciences as well as clinical techniques.	<p>K.1 Recognize the basic medical and dental sciences sufficient to augment students in dental management.</p> <p>K.2 Describe the various clinical techniques, procedures and appropriate investigations related to the practice of dentistry.</p> <p>K.3 Outline knowledge about the oral and dental health structure and systems.</p>
		1-2 Provide the students with knowledge of behavioral and communication skills, that enable students to work in the dental field and formulate the research projects in accordance with ethical principles and professional personality.	K.4 Outline concepts, principles of law, ethics, leadership and teamwork, professionalism and research methodologies in dentistry.
Skills	2- Enabling students to apply the dental conceptual perception, skills of critical thinking, problem-solving and decision- making in the fields of dentistry to fulfill the requirements of the labor market.	2-1 Stimulate the students' critical thinking and problem-solving principles, which enrich learning outcomes.	S.1 Develop clinical reasoning and decision-making skills using evidence based-knowledge based on problem-solving and critical thinking, in addition to carry out advanced research using specialized techniques of research and enquiry in the field of Dentistry.
		2-2 Acquire the skills to analyze the tools necessary for effective differential diagnosis and management of dental patients competently.	S.2 Analyze the clinical presentation and appropriate investigations, necessary for the differential diagnosis and management plan of dental patients.

Quality Assurance Unit

Domains	Program Goals	Program Objectives	Program Learning Outcomes By the end of the program the students should be able to:
	3- Providing the students with the ability and competency in motor skills necessary for different methods in dentistry.	3-1 Facilitate the students' coordination between mental capability and dental motor skills which are essential for practicing dentistry.	S.3 Perform high levels of manual dexterity and control over dental equipment, to achieve excellence in dental patient treatment.
	4- Providing the students with the essential skills to apply the information technology, basic quantitative skills and problems management skills, developing the student's competency in oral and written communications in the field of dentistry while considering the production and quality improvement of applied research.	4-1 Enhance the students' effective communication skills through updated communication tools and skillful use of information technology that serves dental profession.	S.4 Operate three-dimensional procedures with visual acuity and hand-eye coordination. S.5 Illustrate the methods associated with a good dental practice and effective dental communication. S.6 Operate information technology tools and develop essential numerical skills in the dental field including research.
Values	5- Providing students with the basics of teamwork, applying ethical issues, personal and social responsibilities for the provision of community services.	5-1 Stimulate the self-evaluation of the level of learning and performance in the dental field, and encourage the decision-making to continuous self-improvement.	V.1 Demonstrate the scope of personal confidence and community responsibility concerned with the dental profession.
		5-2 Implement principles of professionalism, ethics and behavioral sciences while adhering to the social issues that is related to dental practice,	V.2 Apply the behavioral sciences and the principles of professionalism related to the dental practice.

Quality Assurance Unit

Domains	Program Goals	Program Objectives	Program Learning Outcomes By the end of the program the students should be able to:
		including effective teamwork and leadership values.	V.3 Collaborate and participate effectively in research in addition to taking the culture of leadership and teamwork skills with colleagues and other dental health personnel in the delivery of oral health care.

Program Learning Outcomes Mapping Matrix

(I = Introduced P = Practiced M = Mastered)

Course code & No.	Program Learning Outcomes												
	Knowledge and understanding				Skills						Values		
	K1	K2	K3	K4	S1	S2	S3	S4	S5	S6	V1	V2	V3
ENG 0011	I												
STAT 100	I												
PHYS 110	I												
CSC 105	I												
PSYCH 101	I												
ENG 0012	P												
ESP 101	P												
BHS 111	I												
MDL 111	I												
PHS 115				I									
MEDU 111	I												
DENT 111	I			I									
DENT 112	I			I									
DENT 113	I		I	I									
DENT 114	I												
DENT 115	I			I									
DENT 121				I				I		I	I		
DENT 122			I										
DENT 131	I		I				P	P					
DENT 211	I	I			P	P							
DENT 212	I	I		I									
DENT 213	I			I	I	I			P				
DENT 214	I	I					I						
DENT 221				I				I		I	I		
DENT 222				I	I					P			
DENT 223				I						P			
DENT 224	I	I					P						

Quality Assurance Unit

Course code & No.	Program Learning Outcomes												
	Knowledge and understanding				Skills						Values		
	K1	K2	K3	K4	S1	S2	S3	S4	S5	S6	V1	V2	V3
DENT 231		I					P	P					
DENT 311	I	I		I		P	P						
DENT 312		I			P	P							I
DENT 313	I	I											
DENT 321					I			I		I	I		I
DENT 322		I	I		P								
DENT 323				I									
DENT 331	I	I	I		I		P						
DENT 341		I		I	I	I	I					I	I
DENT 411	I	I			P	P							
DENT 412	I	I	I						P				
DENT 413		P				P							P
DENT 414	I	I	I		I	I							
DENT 421					P			P		P	P		P
DENT 422		P	P							P			P
DENT 423		P	P			P							
DENT 431		P					P	P					
DENT 441		P		P	P	P	P					P	P
DENT 415	I	I	I										
DENT 416		I			P		P						
DENT 425					M			M		M	M		M
DENT 426		M			M	M					M		M
DENT 427	M	M				M							
DENT 428			M						M		M	M	
DENT 445		M		M	M		M	M		M		M	M

Quality Assurance Unit

Program Structure

Program Structure	Required/ Elective	No. of courses	Credit Hours	Percentage
Institution Requirements	Required	6	12	5.58%
	Elective	0	0	0.00%
College Requirements	Required	--	--	--
	Elective	--	--	--
Program Requirements	Required	52	185	86.04%
	Elective	27*	12	5.58%
Capstone Course/Project				
Field Experience/ Internship				
Others			6	2.79%
Total			215 (179+36)	100.00%

* Each student must select 12 units from the 27 elective courses

Numbering And Coding The Courses

Course Code: is a significant set of characters that symbolize the scientific section that offers the course. It ranges between 2 and 4 letters with emphasis on the standardization of coding for similar scientific departments in all faculties of the university compatibility and compatibility with the methods of coding universally recognized.

Course Number: This refers to the course sequence within the courses of a department and consists of three numbers:

Course Code First digit Second digit Third digit

***Hundred's column:** denotes the academic year in which the course is taught as follows: First: Diploma and Bachelor:

- First year 1
- Second year 2
- Third Year 3
- Fourth year and beyond 4
- Second: Masters stage 5
- Third: PhD stage 6

***Tens digit:**

- Integrated Courses
- Specialized Courses
- Dental Skills Courses
- Training Courses

***Ones:** Denotes the course sequence in a specialty.

* **Single digit:** The sequence of the course

Illustration Example

For DENT 423 it is written as follows:

The course "DENT" indicates that the course is subtracted from the College of Dentistry.

No. (4) indicates that the course is taught in the fourth year.

No. (2) indicates that the course continued to specialize in financial transactions in the Fiqh section.

No. (3) indicates that the decision is the third sequence within the decisions of financial transactions.

Quality Assurance Unit

Program Study Plan

First Year

Course Symbol	Course Name	Distribution of Educational Units				Pre-requisites	Co-requisites
		Didactic	Practical	Training	Total		
ENG 0011	Preparatory English (I)	8			8		
STAT 100	Statistics	1		1	2		
PHYS 110	Physics	1	1		2		
CSC 105	Computer Skills	2	2		4		
PSYCH 101	Thinking Skills and Learning Styles	2			2		
ENG 0012	Preparatory English (II)	5			5		
ESP 101	English for Health Professions	2			2		
BHS 111	Human Biology	3	1		4		
MDL 111	Introduction to Biochemistry	2	1		3		
PHS 115	Ethics for Medical Professions	2			2		
MEDU 111	Communication Skills and Health Professions Education	2			2		
TOTAL		30	5	1	36		

*Each student must finish 12 elective units and 6 free units

Quality Assurance Unit

Second Year

Course Symbol	Course Name	Distribution of Educational Units				Pre-requisites	Co-requisites
		Didactic	Practical	Training	Total		
IC 101	Islamic Culture (1)	2	-	-	2		
IC 102	Islamic Culture (2)	2	-	-	2	IC 101	
ARAB101	Arabic Language Skills	2	-	-	2		
ARAB103	Arabic Editing	2	-	-	2		
DENT111	Dental Education	2	-	-	2		
DENT112	Cell Structure & Function	4	1	-	5		
DENT113	Head & Neck: Structure & Function	4	1	-	5		
DENT114	Genetics, Growth, & Development	5	1	-	6		
DENT115	Principles of Diseases	5	1	-	6		
DENT121	Presentation Skills (1)	-	1	-	1		
DENT122	Community Dentistry (1)	1	-	-	1		
DENT131	Dental Skills (1)	2	2	-	4		
TOTAL		31	7	0	38		

Quality Assurance Unit

Third Year

Course Symbol	Course Name	Distribution of Educational Units				Pre-requisites	Co-requisites
		Didactic	Practical	Training	Total		
IC 103	Islamic Culture(3)	2	-	-	2	IC 101	
IC 104	Islamic Culture(4)	2	-	-	2	IC 101	
DENT211	Body Systems in Health & Disease	8	3	-	11	DENT 112 DENT 115	DENT 224
DENT212	General Surgery	2	-	-	2	DENT 112 DENT 115	
DENT213	Neuroscience	3	1	-	4	DENT 113	
DENT214	Principles of Dental Sciences	5	1	-	6	DENT 114 DENT 115	
DENT221	Presentation Skills (2)	-	1	-	1		
DENT222	Community Dentistry (2)	1	-	-	1		
DENT223	Community Dentistry (3)	1	-	-	1		
DENT224	Emergency Medicine for Dental Students	1	1	-	2		DENT 211
DENT231	Dental Skills (2)	2	3	-	5	DENT 131	
TOTAL		27	10	0	37		

Quality Assurance Unit

Fourth Year

Course Symbol	Course Name	Distribution of Educational Units				Prerequisites	Co-requisites
		Didactic	Practical	Training	Total		
DENT311	Introduction to Dental practice	1	1	-	2	DENT 214 DENT 231	DENT 323 DENT 341
DENT312	Restorative (1)	5	-	-	5		DENT 313 DENT 331
DENT313	Restorative (2)	6	-	-	6		DENT 312 DENT 331
DENT321	Presentation Skills (3)	-	1	-	1		
DENT322	Community Dentistry (4)	1	-	-	1		
DENT323	Ethics in Dentistry	1	-	-	1		DENT 311 DENT 341
DENT331	Dental Skills (3)	4	7	-	11	DENT 231	DENT 312 DENT 313
DENT341	Dental Clinical Practice (1)	-	-	5	5	DENT 214 DENT 231	DENT 311 DENT 323
TOTAL		18	9	5	32		

Quality Assurance Unit

Fifth Year

Course Symbol	Course Name	Distribution of Educational Units				Pre-requisites	Co-requisites
		Didactic	Practical	Training	Total		
DENT411	Surgical Management	1	1	-	2	DENT 113 DENT 213	DENT 441
DENT412	Child & Adolescent Care	4	-	-	4	DENT 114 DENT 214	DENT 431
DENT413	Management of Oral & Maxillofacial Diseases (1)	2	1	-	3	DENT 113 DENT 213	DENT 441
DENT414	Management of Oral & Maxillofacial Diseases (2)	2	1	-	3	DENT 113 DENT 213	DENT 441
DENT421	Presentation Skills (4)	-	1	-	1		
DENT422	Community Dentistry (5)	1	1	-	2	DENT 122 DENT 222 DENT 223 DENT 322	
DENT423	Restorative (3)	1	-	-	1	DENT 313	
DENT431	Dental Skills (4)	1	2	-	3	DENT 331	DENT 412
DENT441	Dental Clinical Practice (2)	-	-	12	12	DENT 313 DENT 331 DENT 341	DENT 411 DENT 413 DENT 414
TOTAL		12	7	12	31		

Quality Assurance Unit

Sixth Year

Course Symbol	Course Name	Distribution of Educational Units				Pre-requisites	Co-requisites
		Didactic	Practical	Training	Total		
DENT415	Dental Implantology	1	-	-	1	DENT 312 DENT 313 DENT 411	
DENT 416	Maxillofacial Surgery & Rehabilitation	2	1	-	3	DENT 312 DENT 411 DENT 412 DENT 413 DENT 414	
DENT425	PresentationSkills (5)	-	1	-	1		
DENT426	ProblemSolving in Dentistry	1	-	-	1		DENT 445
DENT427	Orthodontic Treatment for Adults	1	-	-	1	DENT 412 DENT 431	
DENT428	Practice Management	1	-	-	1		DENT 445
DENT445	Total PatientCare	-	-	15	15	DENT 441	DENT 426 DENT 428
TOTAL		6	2	15	23		

Quality Assurance Unit

Elective Requirements

Each student must select 12 units from the elective courses listed below in order to fulfill graduation requirements.

Course Symbol	Course Name	Distribution of Educational Units				Pre-requisites	Co-requisites
		Didactic	Practical	Training	Total		
DENT123	The Art of Sculpture in Dentistry	1	-	-	1		
DENT124	Development of Dental Students	1	-	-	1		
DENT125	Technology and Acquired Knowledge for Dental Students	1	1	-	2		
DENT126	Dentist – Community Communication	1	-	-	1		
DENT132	Digital Editing of Dental Record	-	2	-	2		
DENT133	Management of Scientific Meeting	-	1	-	1		
DENT225	Scientific Editing for Dental Periodicals	1	-	-	1		
DENT226	Alternative Dentistry	1	-	-	1		
DENT227	Laboratory Techniques in Oral & Maxillofacial Pathology	1	1	-	2	DENT 115	
DENT232	Photography in Dentistry	-	1	-	1		
DENT324	Management of Occupational Hazards	1	-	-	1		

Quality Assurance Unit

Course Symbol	Course Name	Distribution of Educational Units				Pre-requisites	Co-requisites
		Didactic	Practical	Training	Total		
DENT325	Nanodentistry	1	-	-	1		
DENT326	Comparative Dentistry	1	-	-	1		
DENT327	The Art of Dental Therapeutics	2	-	-	2		
DENT 328	Dental Technology	-	2	-	2	DENT 214	
DENT329	Dental Informatics	1	-	-	1		
DENT332	Principles of Dental Equipment Maintenance	-	1	-	1		
DENT333	Recent Trends in Oral & Maxillofacial Pathology	1	1	-	2	DENT 114	
DENT424	Biotechnology in Dentistry	1	-	-	1	DENT 313	
DENT432	Advanced Modalities in Oral Radiology	1	1	-	2	DENT 411	
DENT442	Advanced Periodontics Clinics	-	-	2	2	DENT 313	
DENT443	Advanced Endodontics Clinics	-	-	2	2	DENT 313	
DENT444	Advanced Cosmetics Clinics	-	-	2	2	DENT 313	
DENT446	Advanced Orthodontics Clinics	-	-	2	2	DENT 441	

Quality Assurance Unit

Course Symbol	Course Name	Distribution of Educational Units				Pre-requisites	Co-requisites
		Didactic	Practical	Training	Total		
DENT447	Advanced Implant Dentistry Clinics	-	-	2	2	DENT 441	
DENT448	Advanced Oral & Maxillofacial Surgery Clinics	-	-	2	2	DENT 441	
DENT 449	Advanced Pedodontics Clinics	-	-	2	2	DENT 441	
TOTAL		16	11	14	41		

Seventh Year (Postgraduate year)

Internship year : A clinical training year of 12 months period is required to be attained by the student in order to fulfill the requirements for graduation.

Quality Assurance Unit

Introducing Postgraduate Programs

The College of Dentistry has submitted eleven postgraduate programs in the field of dentistry, and it was approved by the University Council in its eighth session on 30/8/1440 Hijri. The Council of the College of Dentistry approved the start of the Doctor of Science program in endodontics and endodontics, and the door for admission was announced and opened, provided that studies begin with it at the beginning of the academic year 1442 Hijri.

Grades and Graduation Process

The grades obtained by the student in each course shall be calculated on the basis that the grading weight is (5) points as follows:

Percentage	Grade	Letter Grade	Point Grade from (5)
100 - 95	High Excellent	+A	5.0
94 - 90	Excellent	A	4.75
89 - 85	High Very Good	+B	4.5
84 - 80	Very Good	B	4.0
79 - 75	High Good	+C	3.5
74 - 70	Good	C	3.0
69 - 65	High Pass	+D	2.5
64 - 60	pass	e	2.0
Less than 60	Fail	f	1.0

*** The overall grade point average when a student graduates based on his/her GPA is as follows:**

1. (Excellent): If the GPA is not less than 4.50 out of 5.
2. (Very Good): If the GPA of 3.75 to less than 4.50 out of 5.
3. (Good): If the GPA is from 2.75 to less than 3.75 from 5.
4. (Acceptable): If the grade point average is from 2.00 to less than 2.75 from 5.

Quality Assurance Unit

* **First class honors** are awarded to students with a cumulative GPA of (4.75) to (5.00) out of (5.00) upon graduation.

* **The second-class honors** are awarded to a student who has a cumulative GPA of 4.25 to less than 4.75 out of 5.00 upon graduation. For the first or second honors, the following conditions are required:

- The student should not have failed any course he studied at the university or at another university.
- The student must have completed the graduation requirements within a maximum period of twelve semesters.
- The student must have studied at least 60% of the graduation requirements.

* The student graduates after successfully completing the graduation requirements according to the study plan. GPA should not be less than the acceptable (GPA) which is 2.

Program Regulations

The program provides a list of related program regulations, including their link to online version:

1. Quality System of Academic Programs
2. Study Plan for Bachelor of Dentistry
3. QU Faculty handbook
4. Policy of Admission, Registration, Study and Tests of Students
5. Student Admission, Registration & Examination handbook
6. Student Manual
7. Student Grievances and Complaints Manual
8. Policies manual including: ([Policies and Procedures Manual 2025](#))
 - Grievance Policy for re-marking the final exam answer sheet
 - The policy of conducting final theoretical examinations for academic courses
 - Academic Advising Policy
 - Student Remediation Policy
 - Student narrative assessment policy
 - Exit Exam policy & procedures
 - E-learning Policy
 - Students' Excuses Policy
 - Students Attendance Policy

Quality Assurance Unit

- Students' registration Policy
- Internship Policy
- Faculty Award Policy
- Teaching Faculty Member Assessment Policy
- Plagiarism Policy
- Communication & Media Policy
- Community Service Policy
- Continuing Dental Education Policy
- Course organization and supervisions policy
- Course committee policy
- Recruitment Policy

Academic Advising and Support

There is adequate provision for academic advising and counseling services to assist students in planning their participation in the program and in seeking subsequent employment. Provision is made for academic counseling and for career planning and employment advice within the department. Adequate protection is provided, and supported by regulations or codes of conduct, to protect the confidentiality of academic or personal issues discussed with teaching or other staff or students. Effective mechanisms are well established for follow up to ensure student welfare and to evaluate quality of service. An effective student support system is available to identify students in difficulty and provide help with personal, study related, financial, family, and psychological or health problems.

Objectives of the Academic Advising and Support Unit

- Preparing students to know and adapt to university life.
- Provide students with correct information about the college, educational policies, re- sources and study programs.
- Enhancing the academic achievement of students, raising their abilities and overcoming obstacles encountered during their academic achievement.
- Reduced chances of academic failure (preventive counseling).
- Provide advice and assistance to students with academic problems of college students.
- Taking care of students with low and distressed academic attainment and taking care of them and following them up to their academic level.

Quality Assurance Unit

- Care and help students socially, physically, health, psychologically and functionally if necessary.
- Attention to outstanding and talented students and provide what will enhance their
- abilities and support their creativity.

Tasks of the Academic Advising and Support

- Develop a plan for academic supervision at the College.
- Supervise the implementation of the academic supervision plan.
- Spreading awareness among students about what is the unit and its importance and how to benefit from its services through meetings, pamphlets and the college website.
- Introducing students to the objectives and mission of the college, its educational pro- grams, scientific departments, and the fields of work of its graduates; The care and services they provide to their students are also enlightened and guided to choose the appro- priate disciplines that suit their abilities and capabilities.
- Distributing new students to academic supervisors and publishing lists on bulletin boards and the college's website at the beginning of each year.
- Periodically upload (mid-term) a report containing the work of the unit as well as a report on the levels of students to the college administration.
- Study the cases referred to it by the College Administration and prepare reports on them to be submitted to the competent authorities.
- Consider students' academic problems raised by mentors and seek to solve them with the college administration.
- Consider complaints of students of an academic nature and devise appropriate solu- tions or submit them to the college administration if necessary.
- Consider the students' complaints towards any course and find solutions and raise this to the college administration.
- Awareness of the importance of academic guidance and the importance of communicating with the academic advisor by publishing brochures and publications and using the college website for this purpose.
- Supervising orientation programs for new students to introduce the system of study and tests in the college.

Quality Assurance Unit

- The Committee meets periodically every 4 weeks or as required to discuss periodic reports or exceptional reports from academic advisors.
- Contribute to solving the students' psychological, financial, social and functional problems and submit them when necessary to the Deanship of Student Affairs to take the necessary action.

Student Responsibility and Role

- Take full responsibility for his academic performance as academic guidance is a mechanism of assistance.
- Undertake the college directory and website to learn about all the requirements of the department, college and university.
- Familiarity with the details of the academic calendar and critical dates related to registration, withdrawal, apology, etc .
- Knowledge of his academic advisor and office hours.
- Meet the mentor to consult on academic and professional goals, program and schedule, and inquire about all aspects of ambiguity.
- Implementation of the guide's recommendations and attendance of the guide as scheduled.
- Notify the advisor of any variables that may affect his program or academic performance.

Student Counseling Services

Academic counseling and advising for students

- The faculty member (Academic Advisor) specified to a selected group of students (Male & or Female) always kept at their meeting on a regular basis (the fourth week of each month) at his office during office hours specified and declared for all.
- Discuss the students on an individual basis (Every student alone & not in front of the group) with respect to the academic process and to undergo Scholastic obstacles.

Quality Assurance Unit

- The academic advisor will record students' problems and their observations during the meeting in a specific prepared form.
- The academic advisor raises periodically reports on its performance with the students to the relevant committee (Committee of Academic Advising)
- The Committee examines all reports received from members of the faculty (academic advisors) and what was stated by the study and look at some of the problems that could not have access to the academic advisor resolved and decision.
- The Committee in turn raises periodic reports to Dean College, including the recommendations of the concluded.
- Policies and regulations are established for fair and consistent processes of student management, with effective safeguards for independent consideration of disputes and appeals.

Identifying talented, creative, outstanding and stumbled students

The program follows two mechanisms to identify outstanding students through cumulative marks and other mechanism through the Academic advising committee.

- For cumulative marks

- The accumulated marks should not be less than 4.25 out of 5.
- The student must have passed six semesters in the colleges where the system of study is eight semesters and eight semesters in the colleges where the system of study more than eight semesters.
- Must not have previously failed in any course.

- Other programs are available to sponsor, motivate and support each group of affiliated and creative students. In this regard, the Academic Advising Unit distributes all students enrolled in the Student Registration Unit to a maximum of four students per faculty member. The student distribution process is completed within two weeks of the beginning of the new academic year and is also transferred to the students/faculty concerned. The academic advisor meets the students allocated to him individually at least once a month. During the meeting the following things are discussed:

1. Registering the studying courses.
2. Omission and addition.
3. Study achievement and achievements in the extracurricular activities.
4. The relation of the student with the faculty members, dental assistants and his peers.
5. Care about the scientific and practical skills for the student.

Quality Assurance Unit

After each meeting the academic advisor formulates the report and discusses all the issues that could affect the student's creativity and progress. Subsequently, it is the responsibility of the academic advisor to support, encourage and work with the student for the resolution of his/her problem.

Additionally, other mechanisms are proposed by the Student Support Center to detect outstanding and creative students through student-related units and committees, including:

- Communication with the Professionalism Unit to choose the outstanding student that is determined by student commitment to attend and depart from the clinic during the clinical sessions, as well as his/her compliance with professional procedures and protocols. According to that the students are honored at the Annual College Ceremony.
- Communication with the Students' Research and Presentation Skills Supervision Committee (SRPSSC) to choose the best student that is nominated in presentation skills sessions and honored. Also, these students are given the opportunities to represent the College in external activity events.
- Communication with the students' club to determine the distinct students in the extra-curricular activities, praise and support them.

As for stumbled students, the BDS program has a set of implementation rules that ensure fair and highly organized administrative procedures for Student Affairs, with the existence of effective mechanisms to deal with conflicts, complaints, and appeals via independent bodies.

The rules are as follows:

1. The student receives a warning if his GPA falls below 2.00 out of 5.00, and it is shown in his academic record.
2. If the student received three warnings in a row, he is academically suspended until a college council decision is issued as follows:

The College Council may grant the student a fourth chance; and if he/she is unable to raise his/her GPA after this chance, the College Council recommends him/her to the Standing Committee of Student Academic Problems.

- a. The Standing Committee of Student Academic Problems has to grant the student the fifth chance according to the recommendation by the College council, provided that there is improvement in the student performance in the previous term that his GPA is no less than 2.00 out of 5.00. If the student was unable to raise his GPA after giving him the fifth chance, the committee may, if necessary, recommend an

Quality Assurance Unit

exception for a final sixth chance thereon to the University Council.

- b. The University Council -as an exception – may grant the student the final sixth chance based on recommendation of the Standing Committee of Student Academic Problems.
 1. As far as the colleges that apply the annual academic system, the student is academically suspended if the actual GPA is below (2.00) two for two consecutive years until the College Council issues a decision as follows:

The College Council shall grant the student a first chance. If the student was unable to raise his GPA after that the College Council recommends thereon to the Standing committee (Student Book).

Committee of Student Academic Problems

- a. The Standing Committee of Student Academic Problems has to grant the student second chance if that is the recommendation of the College Council. If he was unable to raise his GPA after that, the committee can, if necessary, recommend him to the University Council.
 - b. The University Council may not give the student the final third chance unless recommended by the Standing Committee of Student Academic Problems.
2. If the student has not finished the graduation requirements during the period prescribed for graduation his problem should be addressed as follows:
 - a. If the student has not finished the graduation requirements in the maximum period the full duration of the program in addition to half of the required period for the program, the College Council is to give an additional chance to the student to fulfill the graduation requirements up to the maximum that does not exceed twice the original duration assigned for graduation, provided that the cause of non-achievement is acceptable to the College Council.
 - b. The University Council may grant the dismissed students due to depletion of twice the duration of the program the chance for no more than two semesters based on their recommendation of the Standing Committee of the Students' Academic Problems.
 3. The College shall collect all the cases it receives and present them to the councils concerned and notify the Deanship of Admissions and Registration of the

Quality Assurance Unit

decisions within a period not exceeding two weeks from the start of the study. In the event of delay, the student is eligible for registration in the following semester (Student Book).

It should be noted here that total number of cases that were referred to the disciplinary councils in the previous years was 'eight'; appeals were in three cases. Student appeal and grievance procedures are specified in regulations, published, and are widely known within the institution. The regulations are clear and the grounds on which academic appeals are based, the criteria for decisions, and the remedies available.

Appeal and grievance procedures protect against time wasting on trivial issues, but still provide adequate opportunity for matters of concern to students to be fairly dealt with and supported by student counseling provisions.

Appeal and grievance procedures guarantee impartial consideration by persons or committees independent of the parties involved in the issue, or who made a decision or imposed a penalty that is being appealed against.

Procedures ensure that students are protected against subsequent punitive action or discrimination following consideration of a grievance or appeal.

Appropriate policies and procedures are in place to deal with academic misconduct, including plagiarism and other forms of cheating.

Student Advising and Counseling Services

There is adequate provision for academic advising and counseling services to assist students in planning their participation in the program and in seeking subsequent employment.

Provision is made for academic counseling and for career planning and employment advice within the department. Adequate protection is provided, and supported by regulations or codes of conduct, to protect the confidentiality of academic or personal issues discussed with teaching or other staff or students. Effective mechanisms are well established for follow up to ensure student welfare and to evaluate quality of service. An effective student support system is available to identify students in difficulty and provide help with personal, study related, financial, family, and psychological or health problems. (Report of the Committee on Academic Advising).

Learning Resources, Facilities, and Equipment

Learning Resources

The advisory board headed by the Dean of the dental program approved the criteria and guidelines of the textbooks and other learning resources needed for teaching courses and followed by the course directors.

- The textbooks support each course are classified as selected reading textbooks, which are essential books required for learning process and recommended textbooks used supplementary to the first category. The selected reading textbooks should be comprehensive widely used in international dental schools and can stand alone as learning resource for selected topics.
- The course directors start to communicate with all contributors assigned to the course to discuss the guidelines of textbook selection to fulfill the teaching topics and their learning outcomes.
- The course director start to collect the full list of textbook items required as well as other resource materials such as (web-based resources).
- The list is sent to learning resources unit to confirm the availability of such resources whether in the central library or in the college.
- If some of these resources are not available and after the advisory board permission, a request is sent to the deanship of library affairs using the book request template found on the deanship website included the book name, author, ISBN and publication data.

If the requested books are not urgent the list is prepared and sent on an annual basis arranged by the deanship of library affairs.

Blackboard: <https://lms.qu.edu.sa/>

Libraries

Libraries are a major source of information resources used in the process of teaching and learning. Learning resources are intended for all the materials that are included in the libraries of main campus, whether printed (books - periodicals - journals - manu- scripts - scientific messages - ...) or non-printed “electronic” (databases - books Elec- tronic, miniature, CDs, audio materials, ...) In addition to devices such as (computers, self- loaning devices, scanner devices ...) where provided by the university libraries in order to meet the needs of the program they provide and at the appropriate level.

Quality Assurance Unit

Saudi Digital Library

The Deanship of Library Affairs has re-activated access to electronic databases through the Saudi Digital Library. Considerable long-term knowledge accumulation. The library has contracted with more than 300 international publishers covering various disciplines that support the educational process and meet the needs of beneficiaries and organize electronic sources of information accessible to faculties, researchers, students and employees of higher education.

Periodicals Department

This department provides the library with specialized journals in various humanities and applied sciences in Arabic and English languages, conducts technical operations of these journals, cataloging, indexing and facilitates the photographic service of these journals.

Arrangements to Maintain a Healthy and Safe Environment

Faculty, staff, students and patients are responsible for taking reasonable care of their own health, safety and welfare (HSW), and that of others According to the nature of the program by following:

1. Infection control measures and regulations according to CDC & WHO.
2. Signs for emergency exits.
3. Also, obtaining suitable training & information as needed to carry out:
 - Evacuation Plan Policy
 - Medical Emergency Policy
 - Vaccination against hepatitis B Policy
 - Sterilization Policy
 - Student Attire and Dress Code Policy
 - Waste Management Policy
 - Receiving and Delivering Laboratory Tools and Supplies to Students Policy
 - Request and Exchange Medical Tools for Students Policy

Quality Assurance Unit

Student Services

Peer Education Program

The program sponsors all its students and takes care of their various segments. Among these segments are the students that are stumbling academically, the college established for them a program that is interested in this segment represented by the Department of Guidance and Counseling Deanship of Student Affairs.

Honoring Outstanding Students

The program aims to praise and encourage outstanding students to continue and motivate other students to excel. The Department of Guidance Counseling has developed the following criteria to identify outstanding students:

- The accumulated marks should not be less than 4.25 out of 5.
- The student must have passed six semesters in the colleges where the system of study is eight semesters and eight semesters in the colleges where the system of study more than eight semesters.
- Must not have previously failed in any course.
- The ceremony is held at the beginning of each new academic year

Medical Care

Medical care is one of the student rights. Therefore, the program presents free medical care to their students through its medical clinics in the University City in Mulidaa. These comprises general, surgery and specialized clinics, besides the dental clinic. These clinics offer medical care to the staff and officers of the college in addition to the students. Also, the governmental hospitals offer comprehensive medical care to the Saudi citizen including the students, and also they offer medical care to the international students.

Special Needs

(low achievers, disabled, gifted and talented students)

- Special parking area
- Ramps in the entrance of the clinic buildings
- Widen doors
- Special units for left-handed

Quality Assurance Unit

Transportation Services

- Offering organization and supervision for the transfer of female students. The college provides public and private transportation for them. In addition to bus transfer from the main campus to the dental clinics and vice versa
- Offering reductions on the fees of transportation by plane, mass transportation, train and issuing identification cards.

Alumni and Graduates' Employees

The program aims to providing opportunities for students to earn specific jobs that demonstrate their inherent talents and to acquire practical skills through their practice and responsibility.

Areas of work of the graduates may include the following:

- University hospitals
- University academic education
- Ministry of Health hospitals
- Military hospitals
- Private hospitals
- Health care centers
- Private clinics
- Health units of the Ministry of Education
- Clinics of the Ministry of Social Affairs
- Centers of medical research

Extracurricular Activities

Student Clubs

As the student is the focus of activities, the Deanship decided to establish student clubs in the dental college. So students get to supervise and practice activities themselves. The board of directors of the club consists of 11 students, one of whom selects the director of the club and is fully responsible in front the staff member supervising the club. All the supervisors of the different clubs are associated with the general supervisor of the clubs in the Deanship of Student Affairs.

Quality Assurance Unit

Athletic and Cultural Facilities

The university as well as the program cares for developing its athletic and cultural facilities, and it currently constructs “Assembly of Athletic Facilities”, which most of its units have been finished. This Assembly contains group of athletic facilities of high standard, and have integrated combos of stadia, sport fields and services for University staff, students, employers and officers.

Entertainment

This is done through the cultural, sporty and social activities, which is done through the student clubs. The program has high level facilities in which these activities may be practiced

Religious and Social Awareness Program

The Department is careful to select the materials of the awareness programs accurately, and in the public interest, which helps guide and guide students and educate them, and immunize them culturally, religiously and socially.

Community Services

It is an activity that render aid or perform volunteer service that directly benefits the local community in Qassim province, or anywhere in the Kingdom of Saudi Arabia, and for which the college does not receive financial compensation. These activities/Events must be separate from regular curricular activities, extracurricular activities (athletics, trips, etc.), and the regular college schedule.

Community Service activities are organized by the college through the Community Services Center and its affiliated units and committees, in addition to Qwafel Voluntary Dental Convoys, the Dental Students Club, and the academic departments. Also, these services are implemented as a part of an event organized by the Deanship of Community Services during the academic year.

Quality Assurance Unit

Purpose

The purpose of the Community Service Policy is to validate schemes by which the college can organize consistently, successful community service activities by which promote personal, social and civic development of students, faculty and staff of the college, achieving vision and mission of the college/ university and provide health, social, cultural and educational benefits to the Saudi society.

Events

Is one of the community service activities that the college organize or participate in.

Examples of events:

- Organizing and participating in Dental Convoyes.
- Organizing and participating in Oral Health Days.
- Organizing and participating in School Field Visits Programs.
- Therapeutic Services provided at the Dental Teaching Hospital.
- Advanced Radiology Department provided by the Dental Teaching Hospital.



Quality Assurance Unit



Quality Assurance Unit

Teaching Staff Services

- Providing training programs for new and existing faculty members.
- Providing training courses and workshops for developing faculty members and assistants' skills.
- Providing scientific research resources from the digital library through the Deanship of Libraries at the university and providing statistical analysis as well as language editing services.
- Providing ways to cooperate with all other faculties and colleges to facilitate the scientific research work for all faculty members and assistants.
- Motivating faculty members for international publication in international journals approved for publication by rewarding and providing material and moral support.
- Providing comprehensive health care for all faculty members and their families in university and government hospitals.
- All aspects of the Program are evaluated and reviewed regularly by senior administrators and quality committees based on quality indicators.
- The teaching staff feedback collected to evaluate the adequacy and quality of the services provided by either direct feedback of teaching staff to heads of the departments and through yearly questionnaire-based surveys.
- Using feedback results, the strengths and weaknesses of the program and quality of the services provided is analysed and action plans are prepared to overcome weak areas that require improvements.

Teaching Staff Performance Assessment

- The performance of teaching faculty members are assessed yearly at four levels in terms of teaching performance, scientific production and community services.
- The whole evaluation procedures organized by the Dean and the Faculty Evaluation Unit.
- The final evaluation is made only after an analysis of feedback from students, peers, the head of the department, and the faculty member himself.
- Evaluation procedures follow a formal delivery of routine, recorded, and timely feedback of teaching performance to the faculty member.
- Feedback is always communicated to staff members.
- These evaluation results and feedback are used to improve the performance.

جامعة القصيم

المملكة العربية السعودية - القصيم - بريدة
ص ب ٦٦٦ الرمز ٥١٤٥٢
سنترال الجامعة: +٩٦٦ ٦٣٨٠٠٠٥٠

Qassim University

KSA - Qassim - Buraydah
P.O.Box 6666-51452
Tel: +966 6 3800050

كلية طب الأسنان

المدينة الجامعية - المليدا
ص ب ٦٧٠٠ بريدة الرمز البريدي ٥١٤٥٢
هاتف: +٩٦٦ ٦٣٨٠١٧٦١ فاكس: +٩٦٦ ٦٣٨٠١٧٦٢

College of Dentistry

Campus - Molida
P.O.Box 6700 buraydah, Postal Code 51452
Tel: +966 6 3801761 Fax: +966 6 3801762

➤ <http://dent.qu.edu.sa>